

PC Software USB Driver Install Guide

Use the supplied USB cable to connect the oscilloscope with a PC through their USB ports.

Note: If you use a USB cable that is not supplied by us, some problems such as connection error and signal disturbing might occur.

For Windows Vista\Windows 7\Windows 8

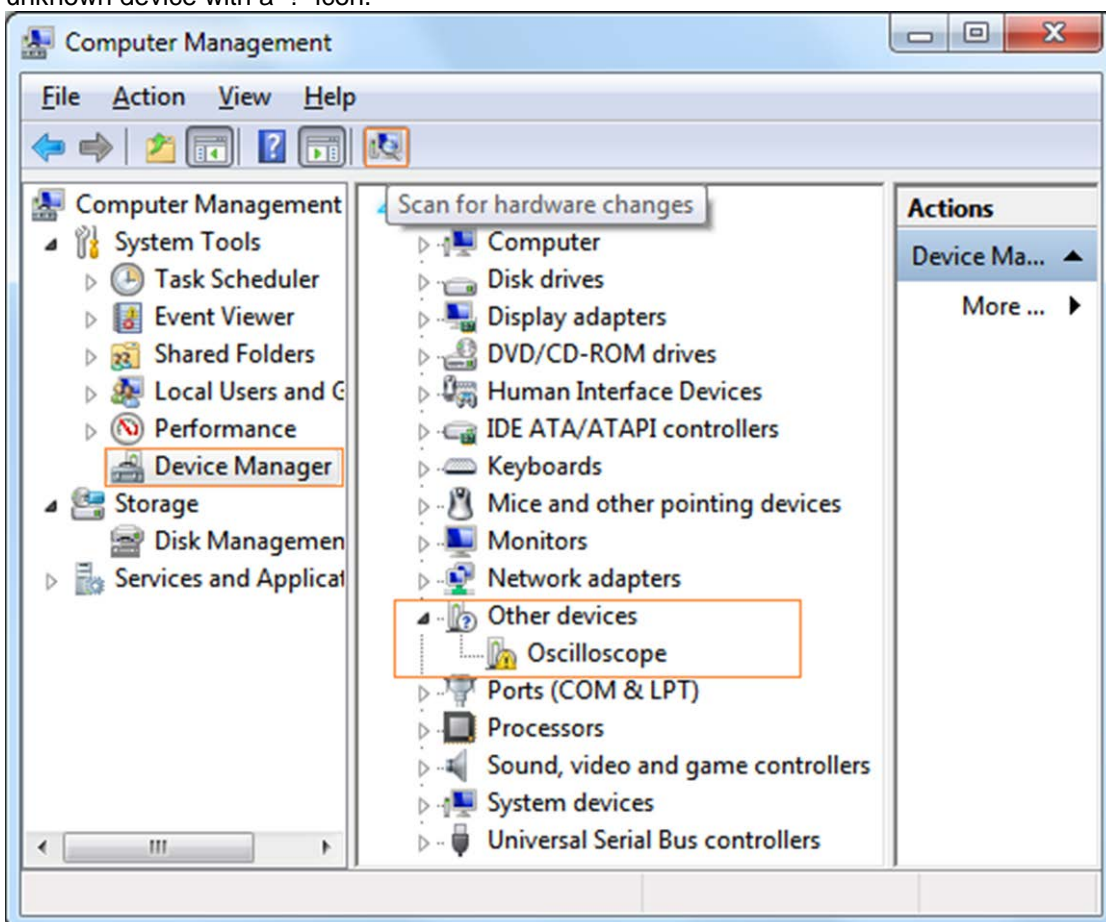
The Microsoft Windows Systems since Windows Vista, Windows 7 or Windows 8, change a lot, which require a new installation guide of USB driver. Here it is.

During the whole installation, please assure that the device is running well and plugged into PC from USB.

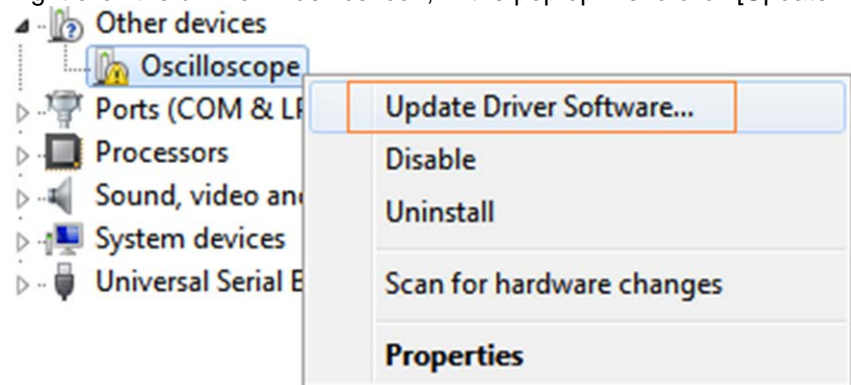
Right click [Computer], you can find it on the desktop, or in [Start] menu.



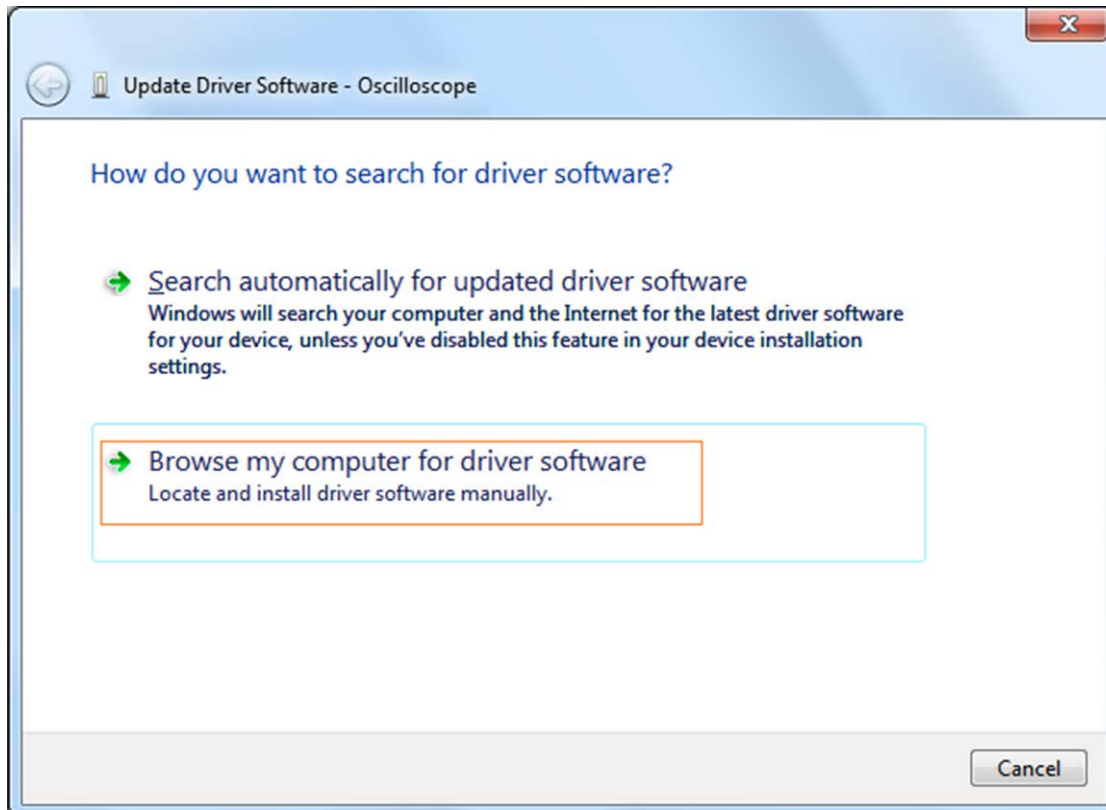
in the pop up menu, click [Manage] and it will open a window named "Computer Management", as follow, in the left side click [Device Manager], it will show a devices tree in the middle, and then click the last one button "Scan for hardware changes" in tool bar as follow, and if the device is running well and plugged into PC, computer will detect an unknown device with a "!" icon.



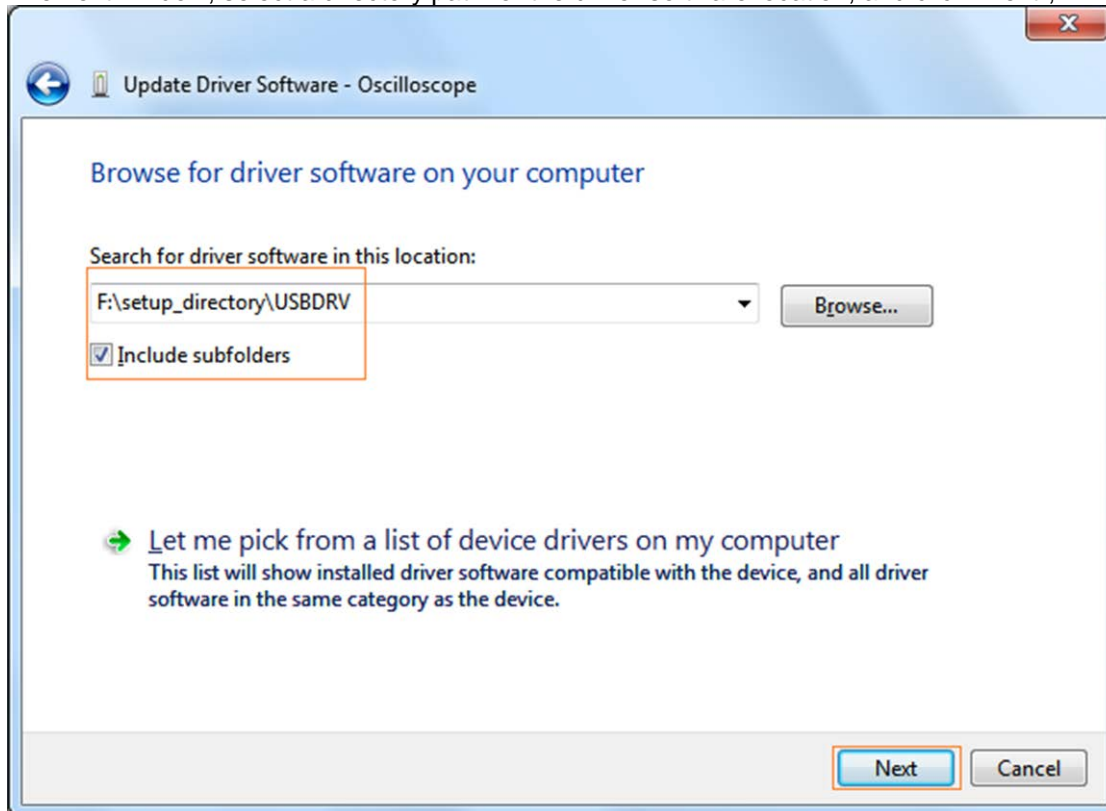
Right click the unknown device icon, in the pop up menu click [Update Driver Software...],



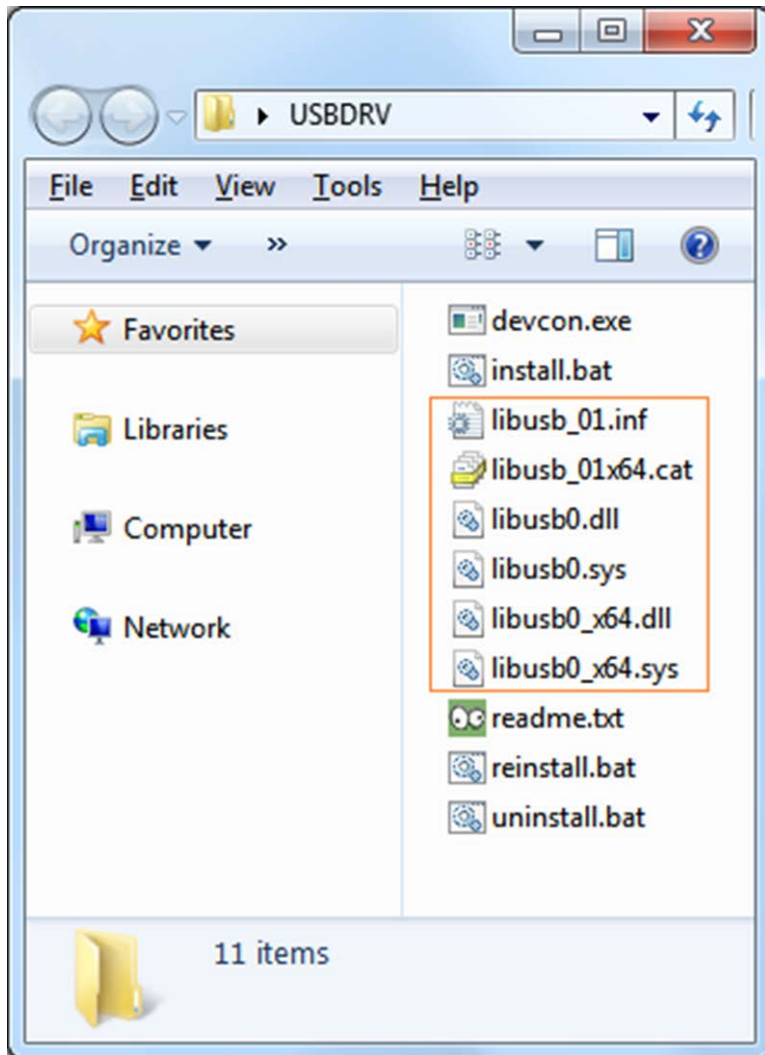
In the open window, select [Browse my computer for driver software],



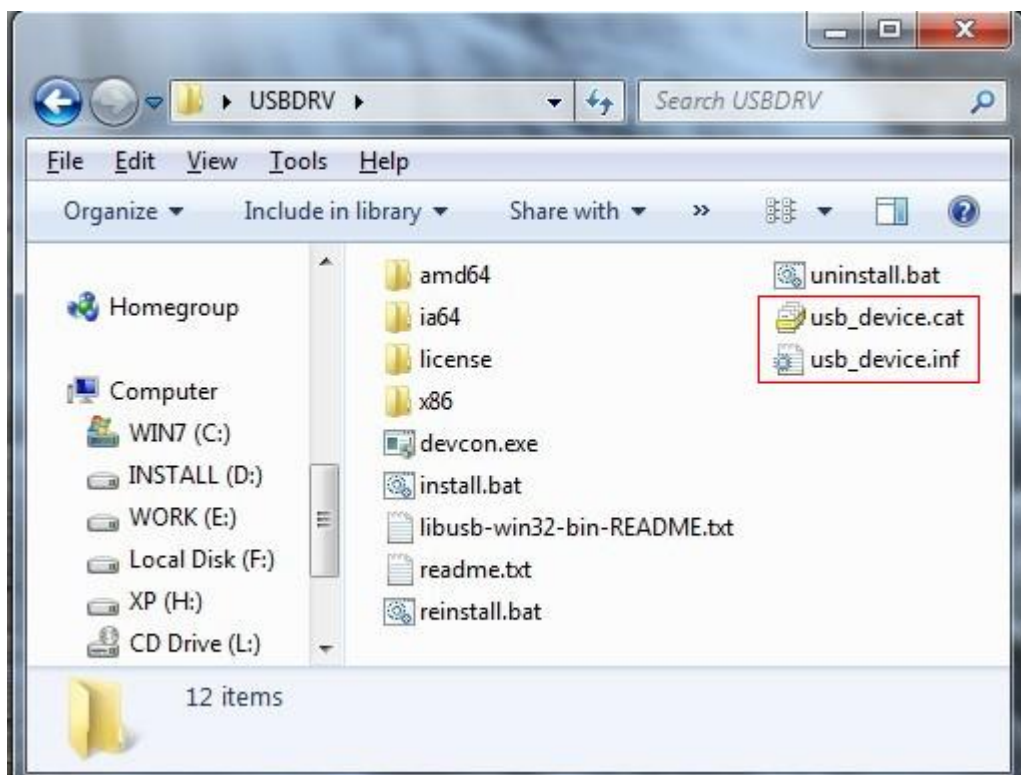
The next window, select a directory path for the driver software location, and click "Next",



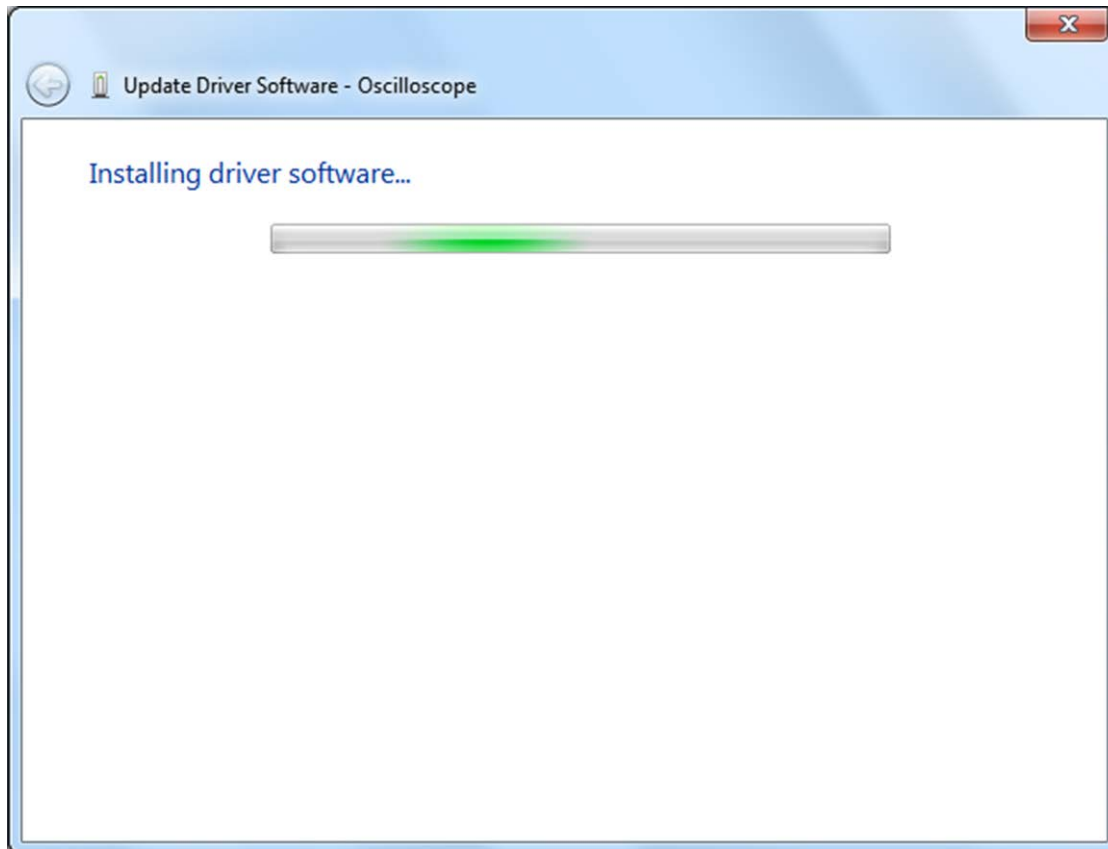
Notice: the driver software location is a directory that is under the software setup folder named "USBDRV" (For Windows 8, the location is USBDRV\USBDRV_win8), and the contents inside are like these:



Or like this, than you should use the "USBDRV" directory to indicate the ".inf" file, and to the ".sys" or ".dll" file, you can indicate then in different directories like "x86", "ia64" or "amd64" depending on the CPU, but most of time just x86 and amd64 are enough.

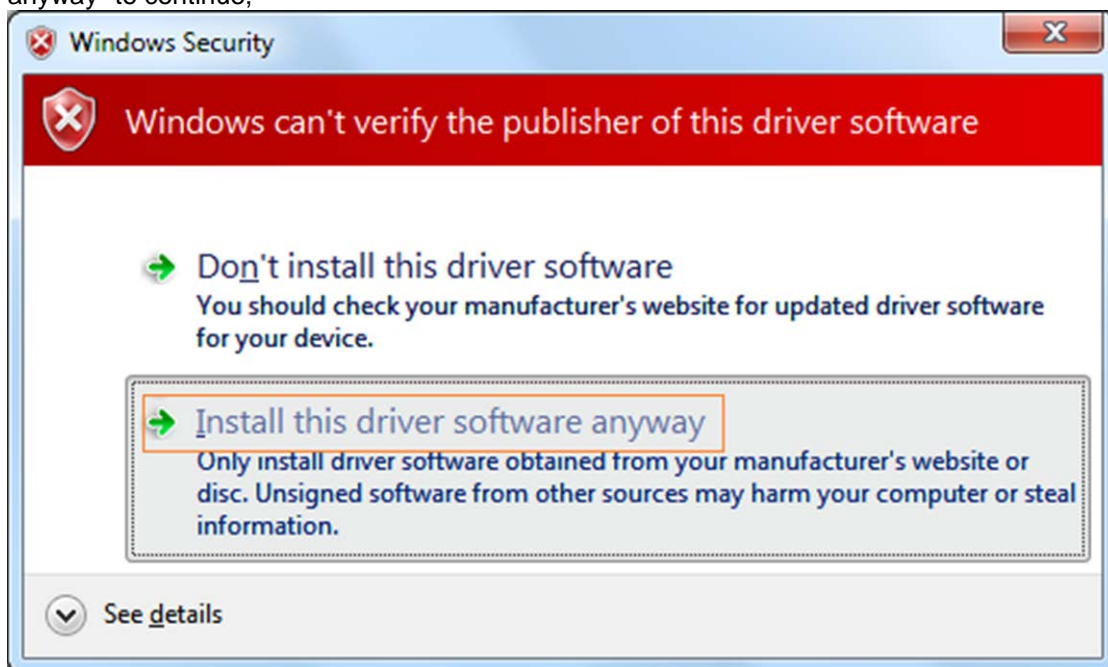


OK, back to the driver installing, after last "Next" step, the system is installing driver software for you, as follow,

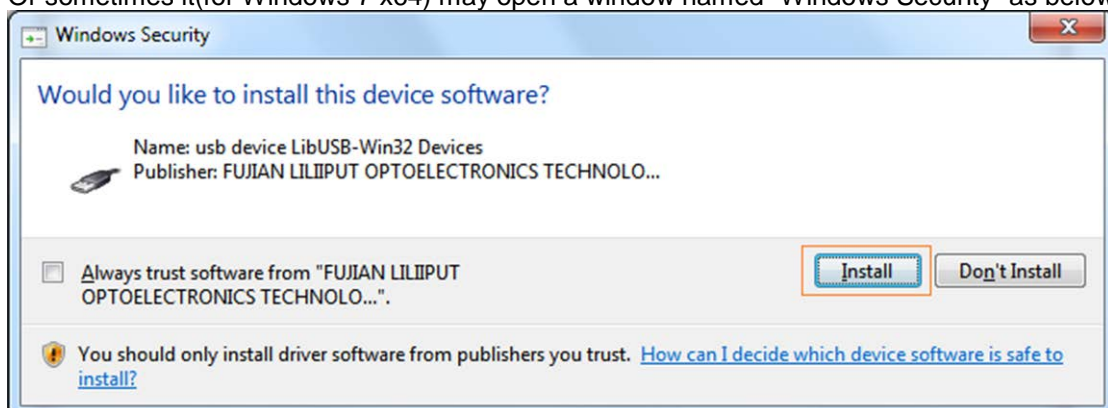


In the course,

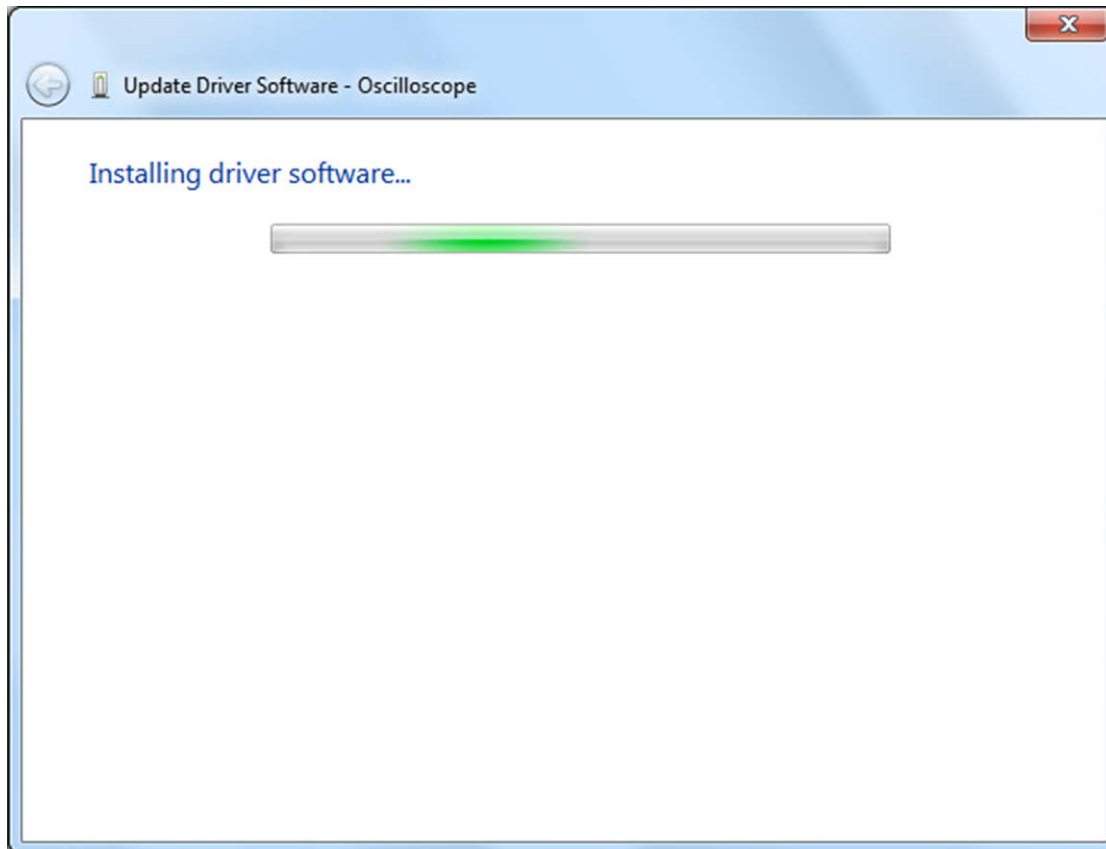
It(for Windows XP x86&x64, Windows Vista x86&x64, Windows 7 x86) may open a window named "Windows Security" as below, and just select "Install this driver software anyway" to continue,



Or sometimes it(for Windows 7 x64) may open a window named "Windows Security" as below, and just click "Install" to continue,

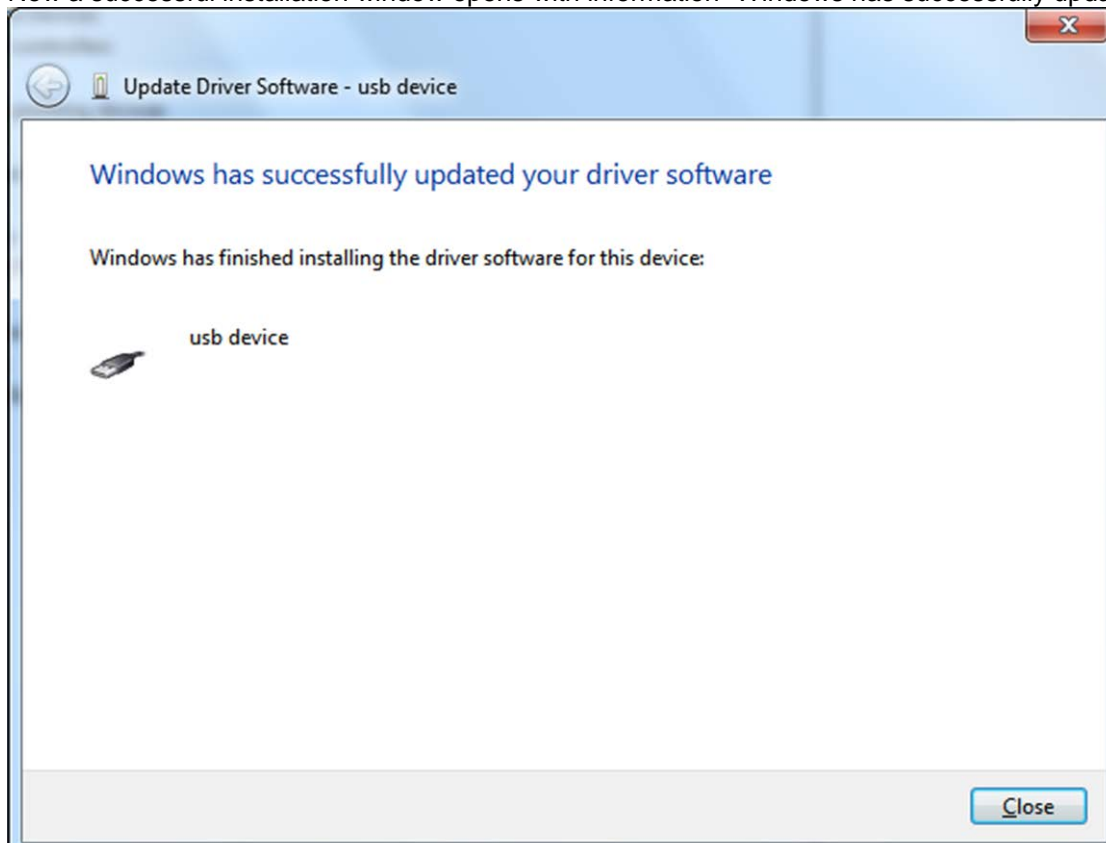


And then continue installing,

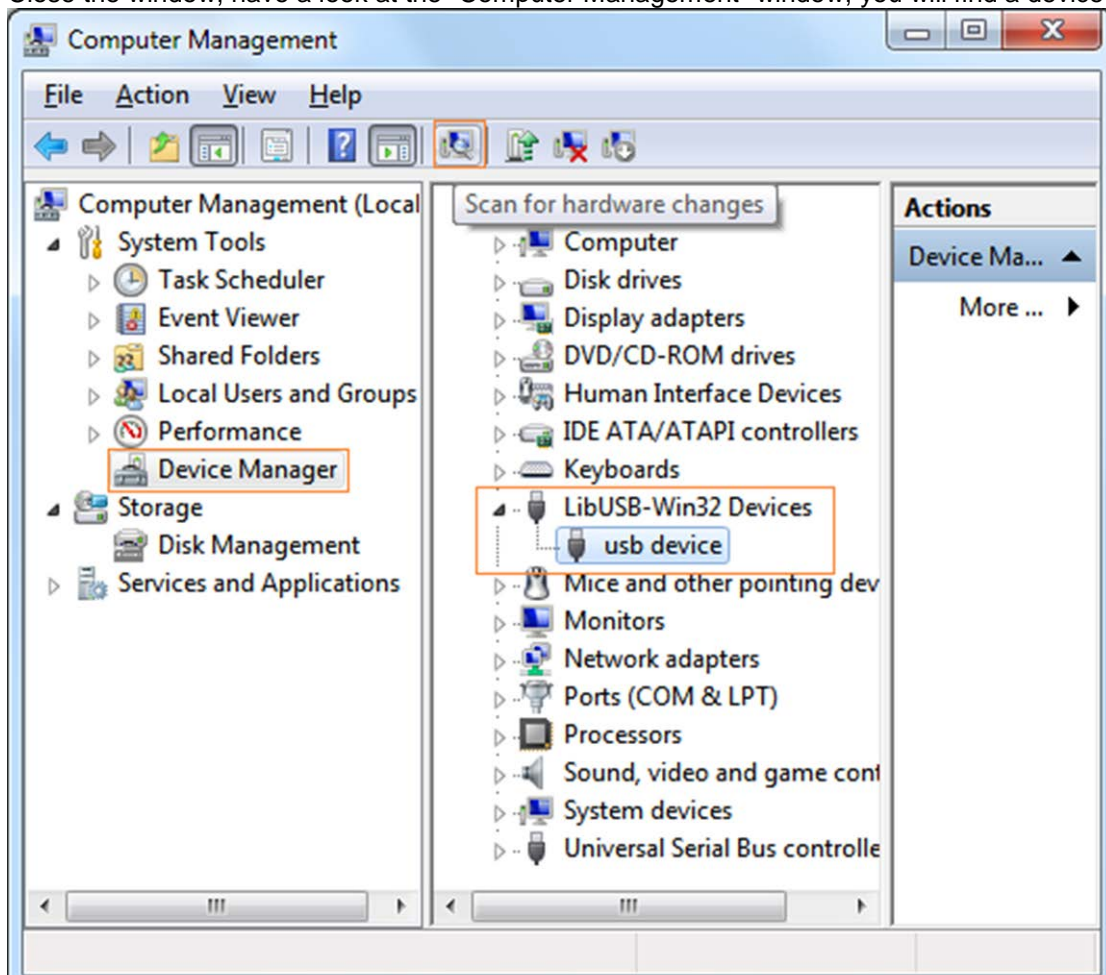


And finish.

Now a successful installation window opens with information "Windows has successfully updated your driver software".



Close the window, have a look at the "Computer Management" window, you will find a device under [LibUSB-Win32 Devices], it should be like this:



Now the USB driver will work.

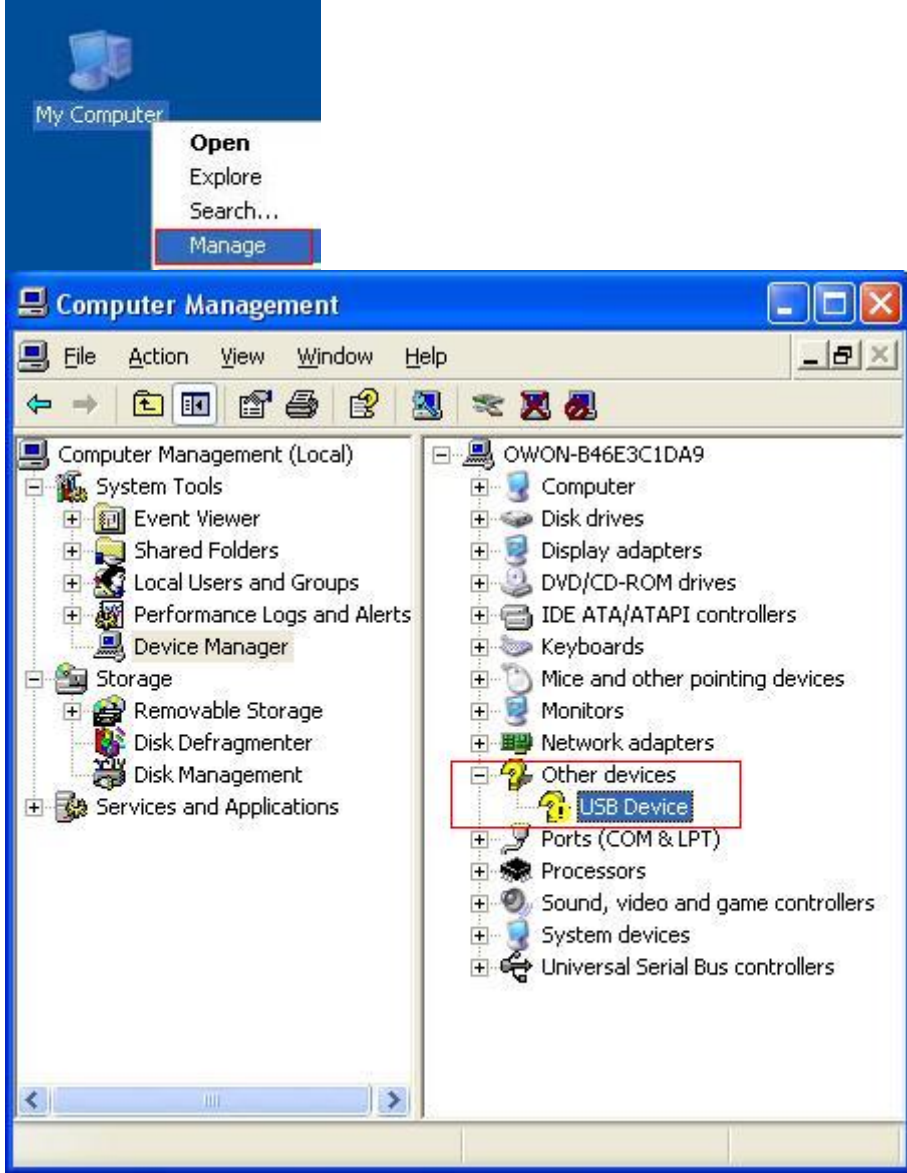
For Windows XP\Windows 2000

Notice: for both x86 and x64.

Plug into the running well device to open [Found New Hardware Wizard] dialog.



Or you can right click [My Computer] and select [Manage], in the left area of opened [Computer Management] select [Device Manager] , double click the item [USB Device] with "?" in the middle area to open the Wizard,



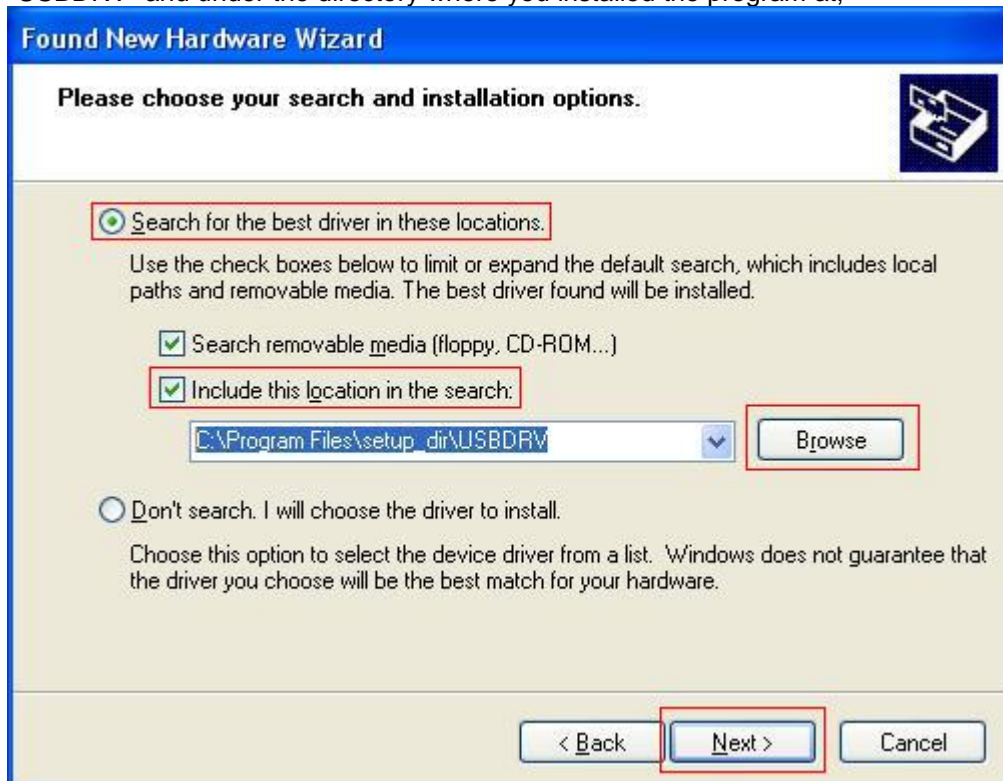
In the Wizard, select [No, not this time] ,



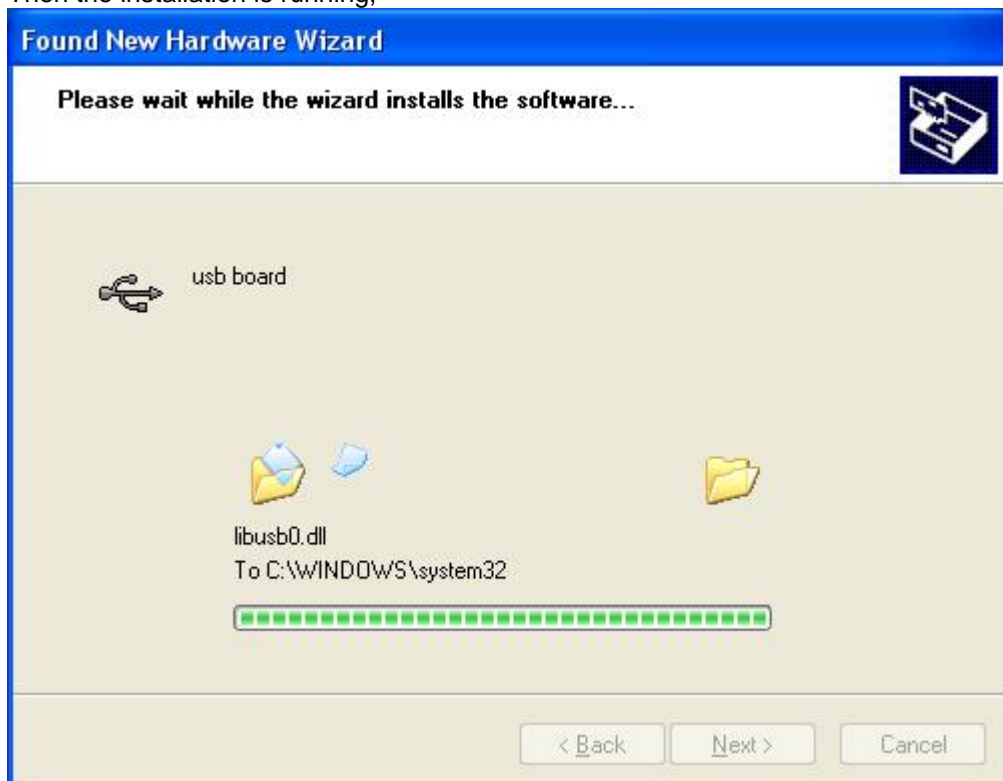
select [Install from a list or specific location(Advanced)] ,



select [Search for the best driver in these locations.] , then select [Include this location in the search] and indicate a directory location for USB driver which is named as "USBDRV" and under the directory where you installed the program at,



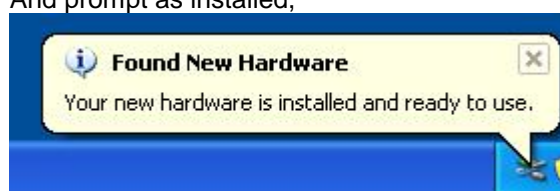
Then the installation is running,



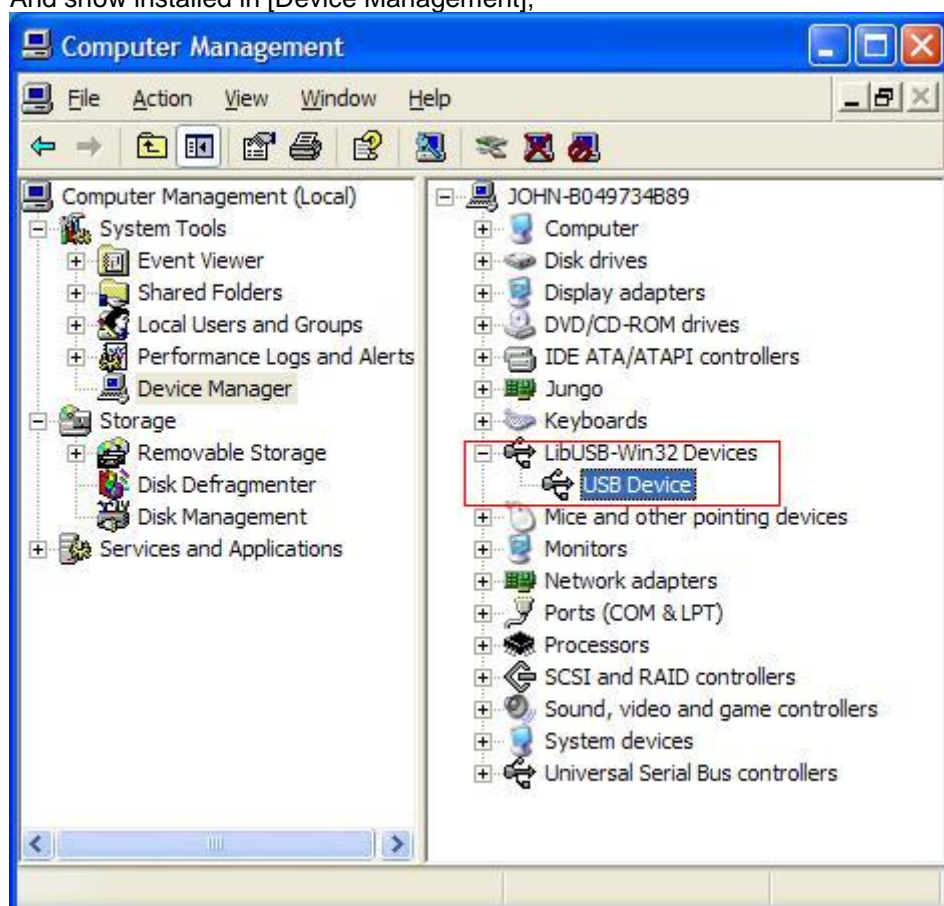
And complete,



And prompt as installed,



And show installed in [Device Management],



Now you can use the program and use if for USB communication.

If there is an early version of USB driver in your computer, you could try running "reinstall.bat" to fix, the file is under the directory of "USBDRV".