

EasyWave Install Guide

1 Before Installation

1.1 Hardware requirement

- 1GHz or higher processor
- 200M or more hard disk space
- 1024x768 monitor resolution or above
- 256M or more RAM
- USB interface and cable
- LAN interface and cable

1.2 System Support

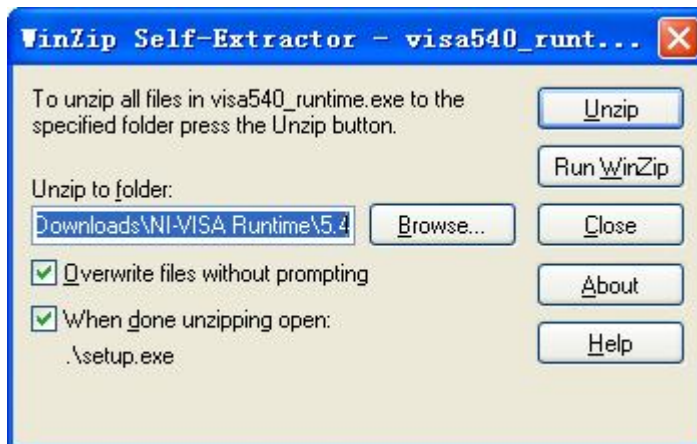
- Microsoft Windows2000, XP system
- Win7 32bit and 64bit system
- Vista 32bit and 64bit system
- Windows 8 32bit and 64bit system.

1.3 Software requirement

NI-VISA:

Before using this application, you have to install the NI-VISA runtime library, you can find it in the installation folder or you can download it from [NI-VISA](#) web site. For example, you can download [NI-VISA Run-Time Engine 5.4](#) directly to your PC. Follow the steps below to install it:

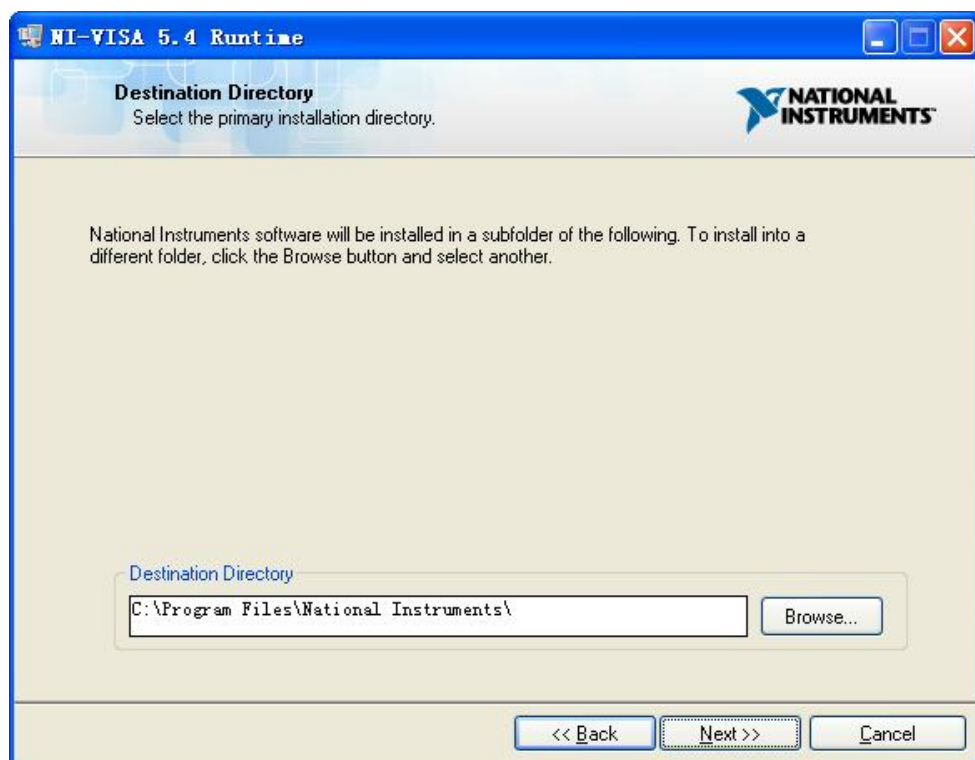
- a. Double click the visa540_runtime.exe, the dialog shows as below:



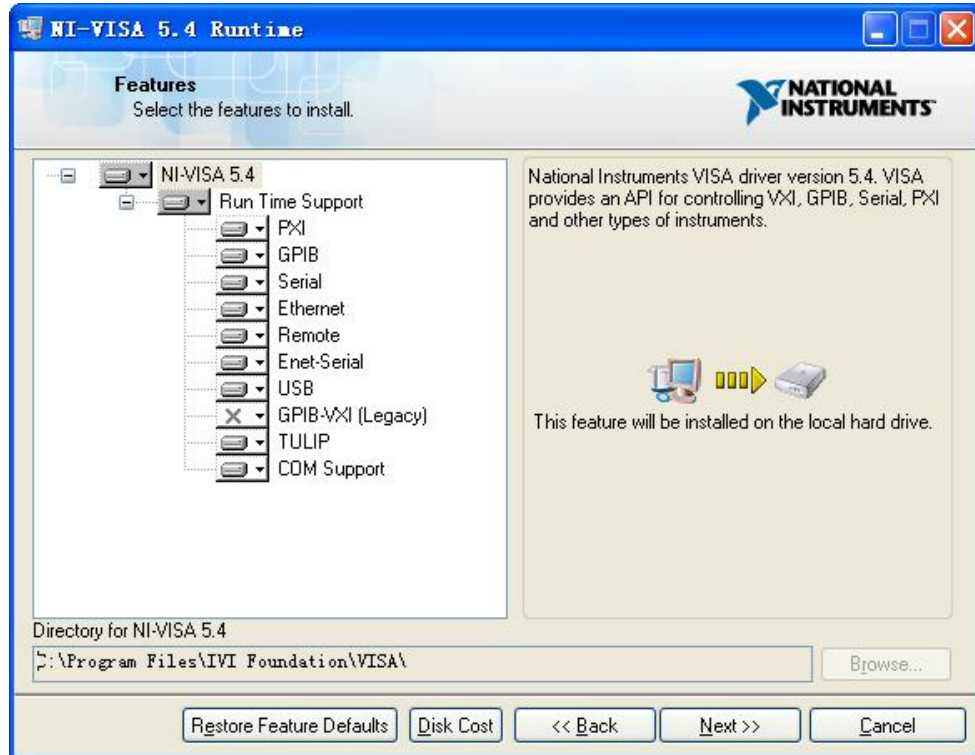
- b. Click Unzip, the install process will launch after unzipping files, and the dialog is as shown below:



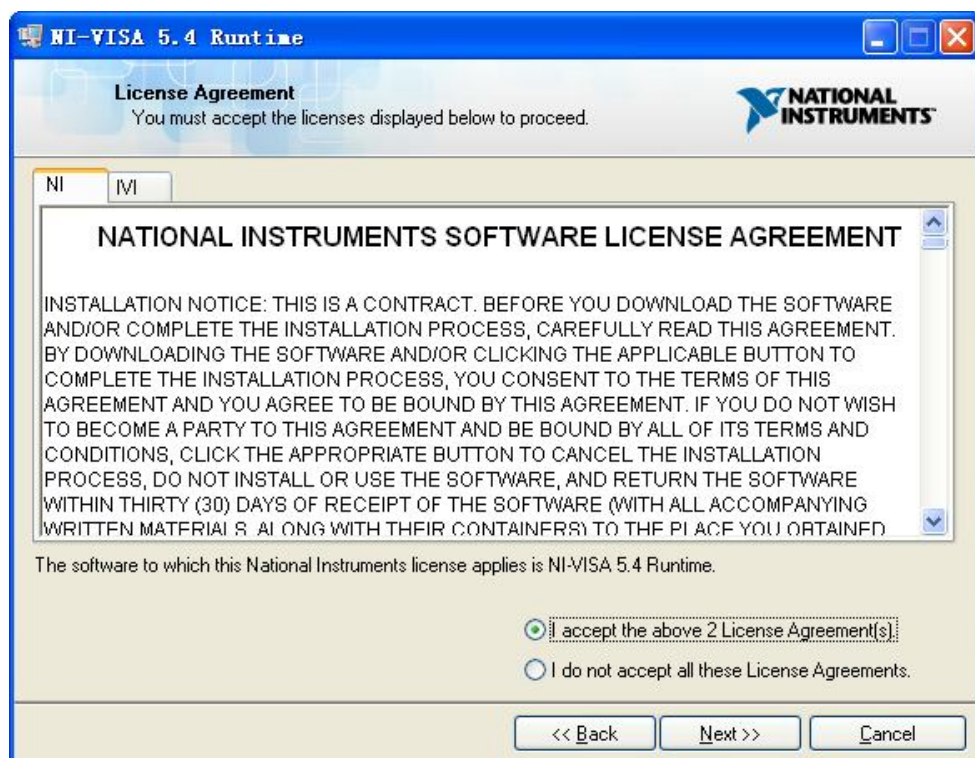
- c. Click Next, and the dialog is as shown below:



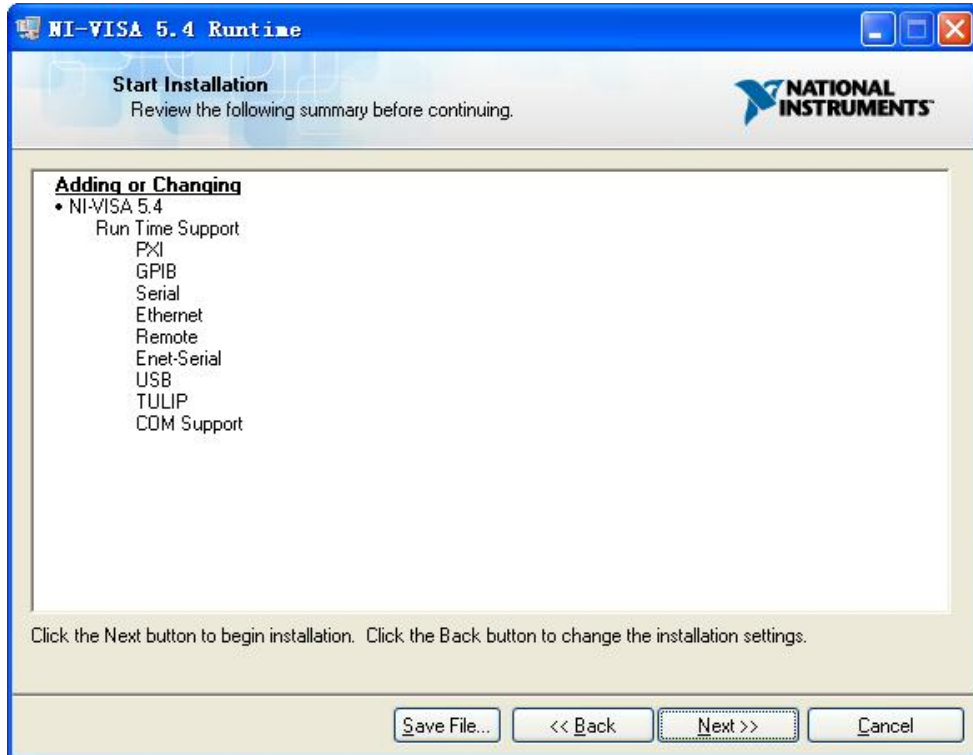
- d. Set the install path, default path is “C:\Program Files\National Instruments\”, you can change it. Click next, and the dialog is as shown below:



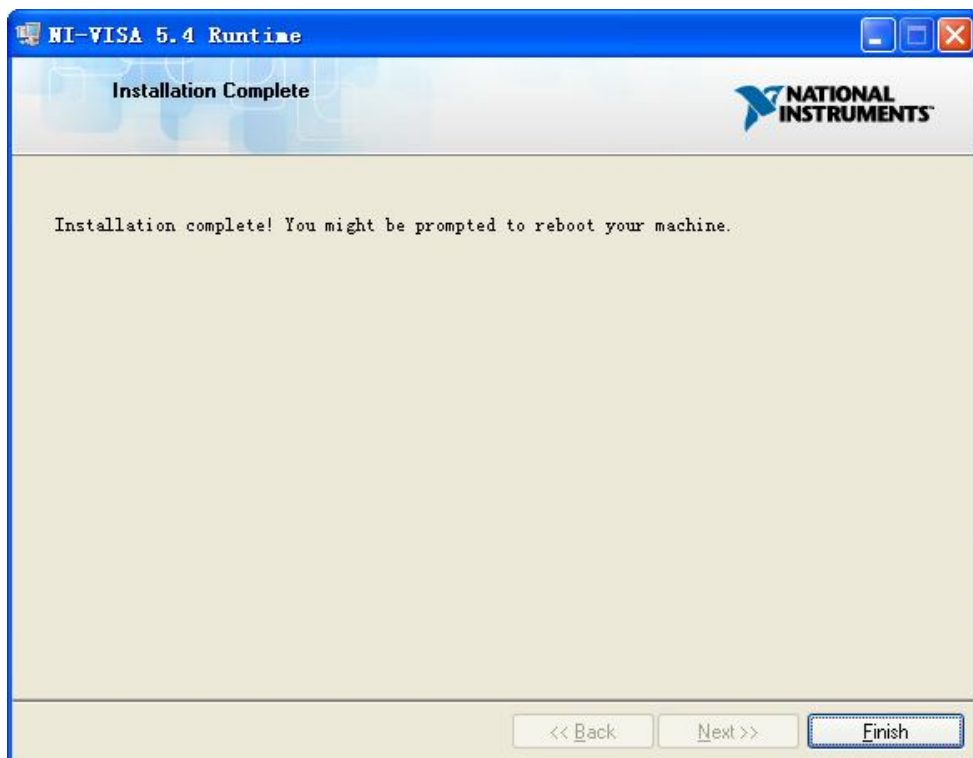
- e. Click Next twice, and the dialog is as shown below:



- f. Accept the agreements and click Next.



- g. Click Next to begin the installation.



- h. Now the installation is complete.

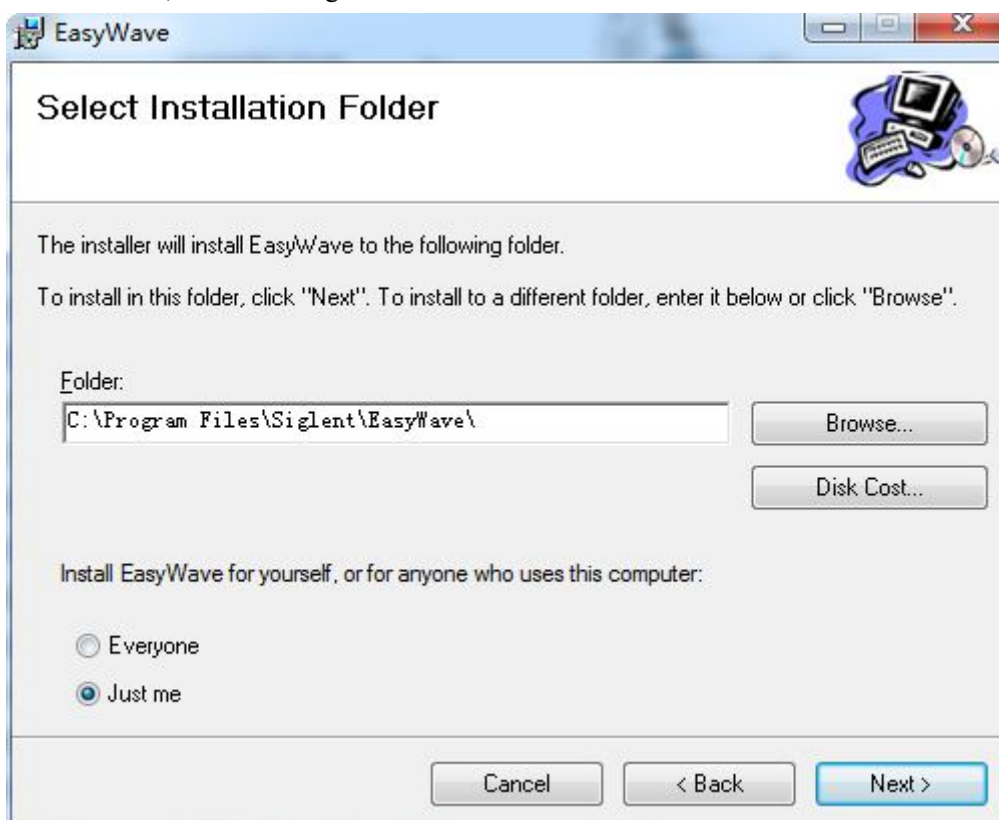
2 Installation

- a. Double click the EasyWave_setup.msi , launch the install process, and the dialog is as

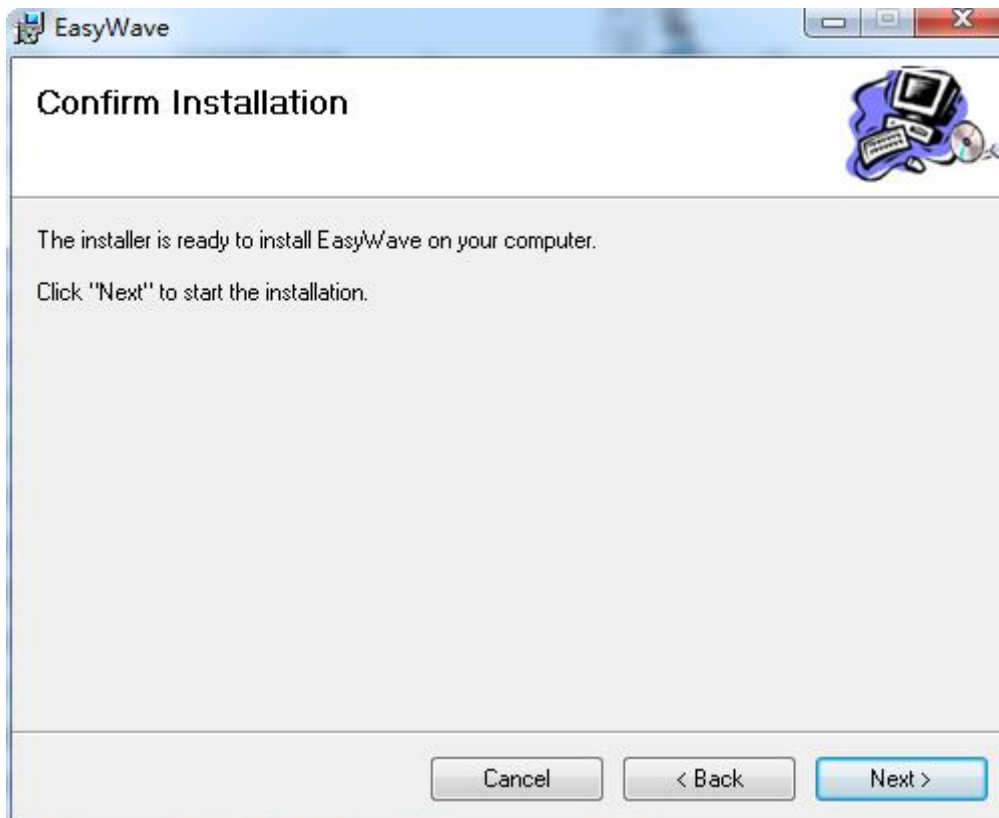
shown below:



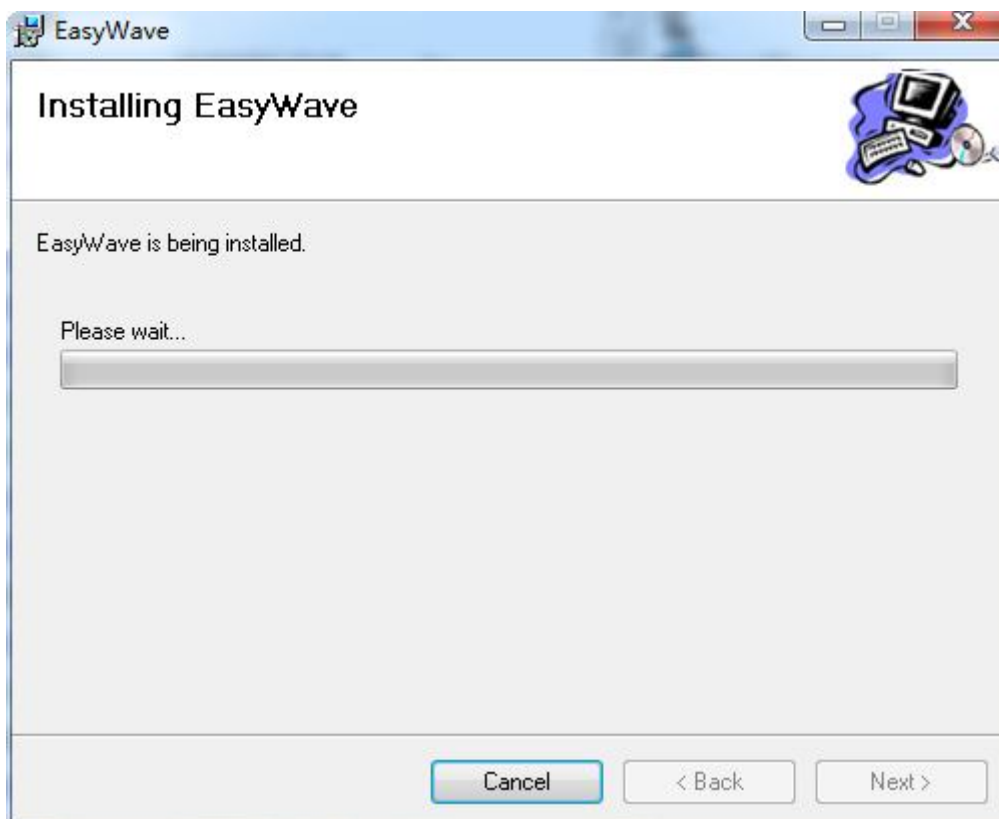
b. Click next, and the dialog is as shown below:



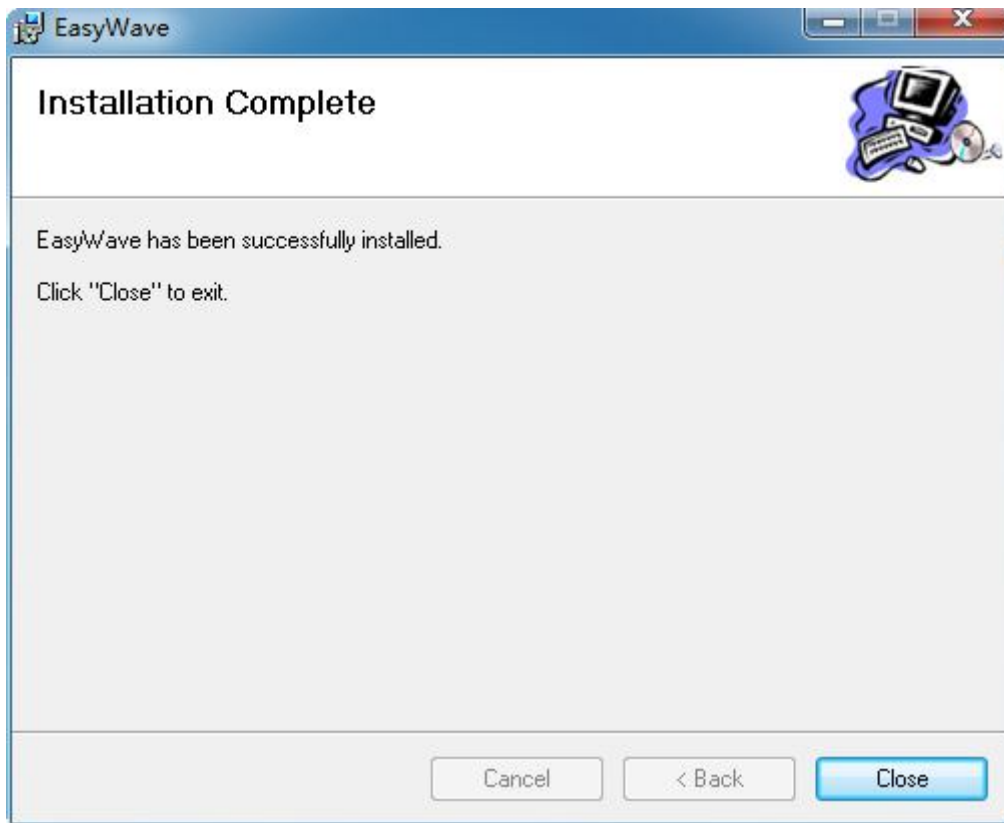
c. Set the install path, default path is "C:\Program Files\Siglent\EasyWave", you can change it. Click Next, and the dialog is as shown below:



d. Click Next to start the installation:



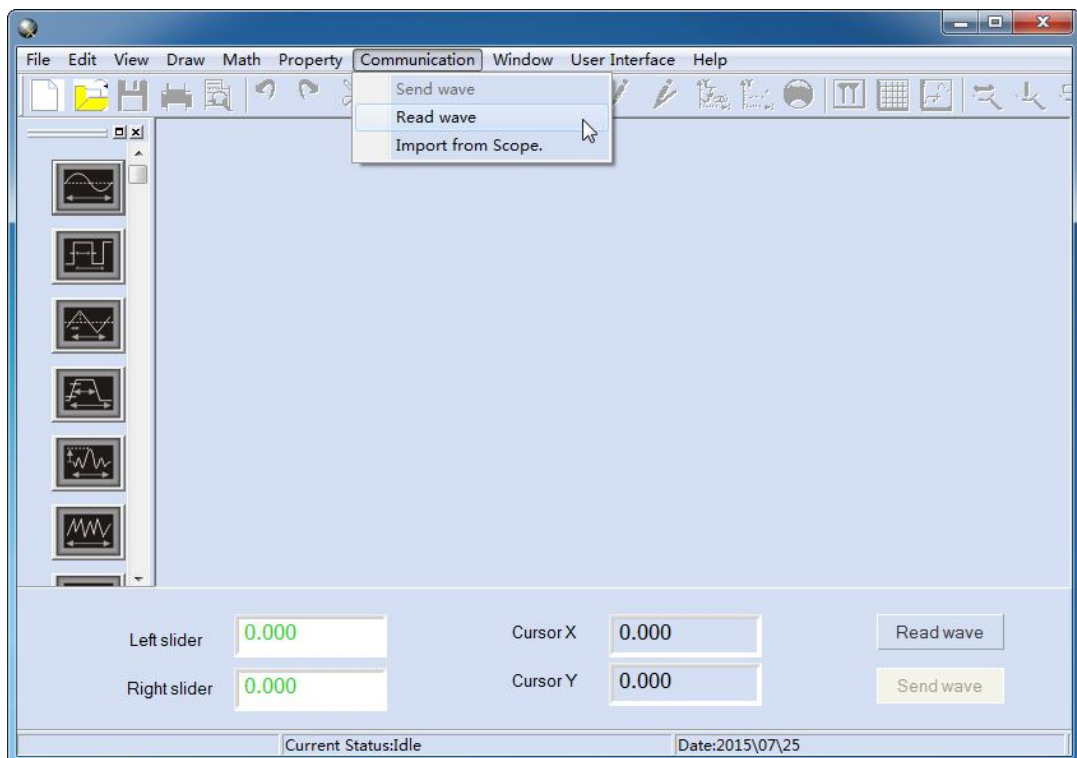
e. Wait a minute, and the installation will be complete:



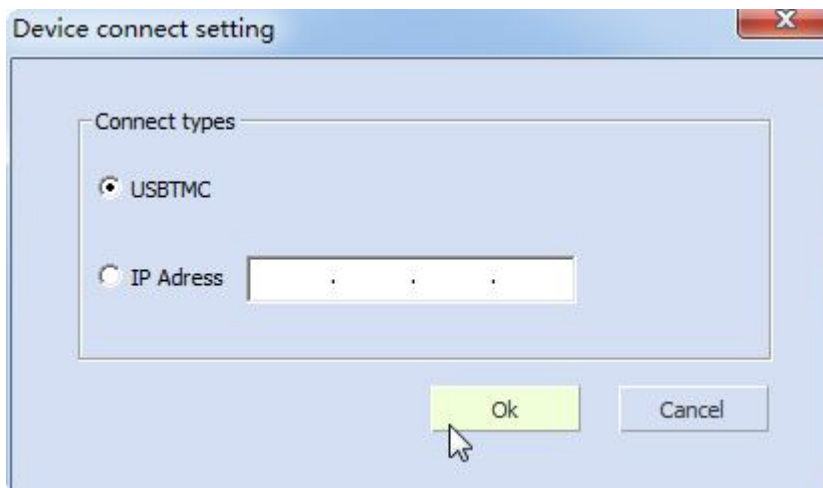
3 Connect Device

For example, connect the device with PC via USBTMC protocol.

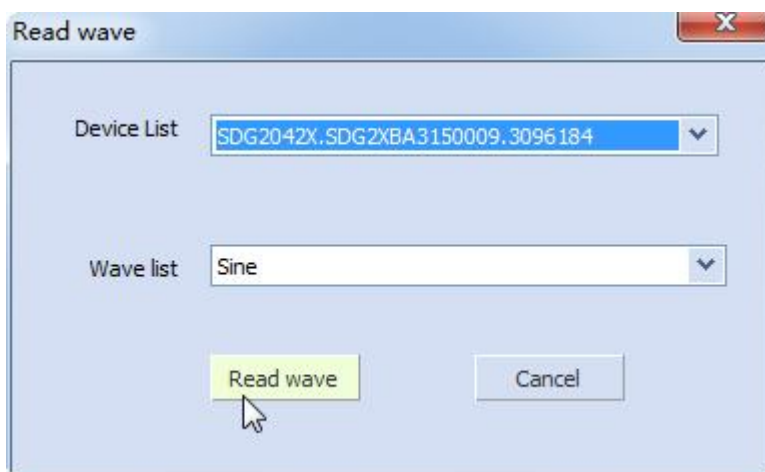
- a. Launch EasyWave, the application is as shown below.



- b. Click Communication>>Read wave, the Device connect setting dialog is as shown below:



c. Choose USBTMC and click OK, the Read wave dialog is as shown below:



d. Click Read wave and then get the returned information, the result is as shown below:

