

Installation Guide

SSA3000X Spectrum Analyzer

2015 SIGLENT TECHNOLOGIES CO., LTD

1. Software Installation

1.1 Installation Instructions

System Support

- Microsoft Windows 2000, XP system
- Win7 32bit and 64bit system
- Vista 32bit and 64bit system
- Windows 8 32bit and 64bit system.
- Windows 10 32bit and 64bit system

1.2 Install NI-VISA

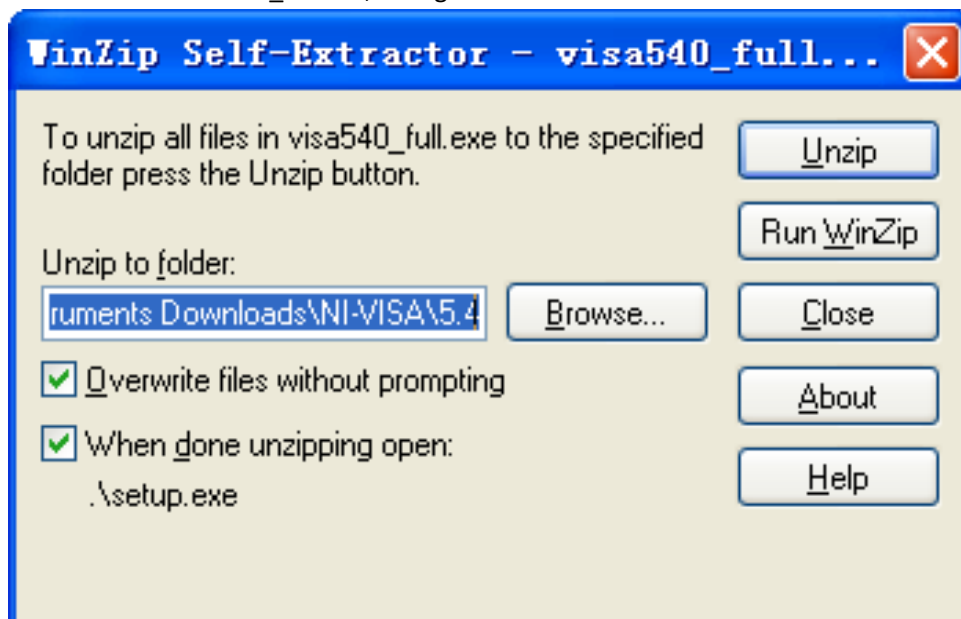
Before install EasySpectrum, you need to install NI-VISA, which you can download from the NI-VISA web site. About NI-VISA, there are full version and Run-Time Engine version. The full version include NI device driver and a tool named NI MAX that is a user interface to control the device. The Run-Time Engine version which is much smaller than the full version only include NI device driver.

For example, you can get NI-VISA 5.4 full version from: <http://www.ni.com/download/ni-visa-5.4/4230/en/>.

You can also download NI-VISA Run-Time Engine 5.4 to your PC and install it as default selection. Its installation process is similar with the full version.

After you downloaded the file you can follow the steps below to install it::

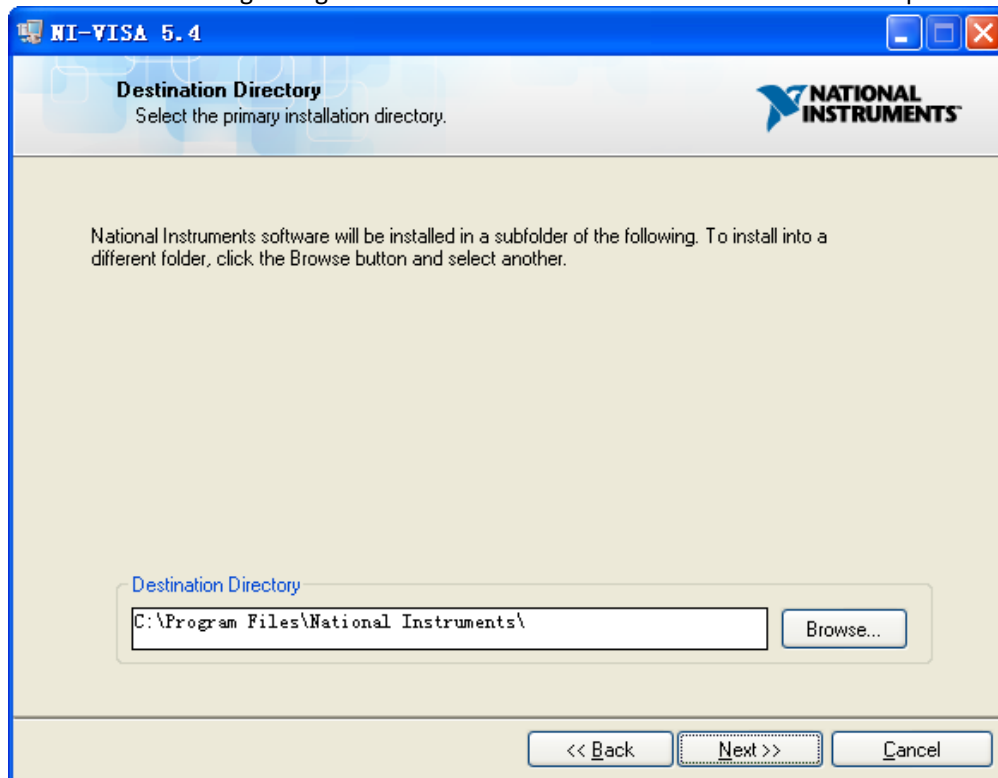
- a. Double click the visa540_full.exe, dialog shown as below:



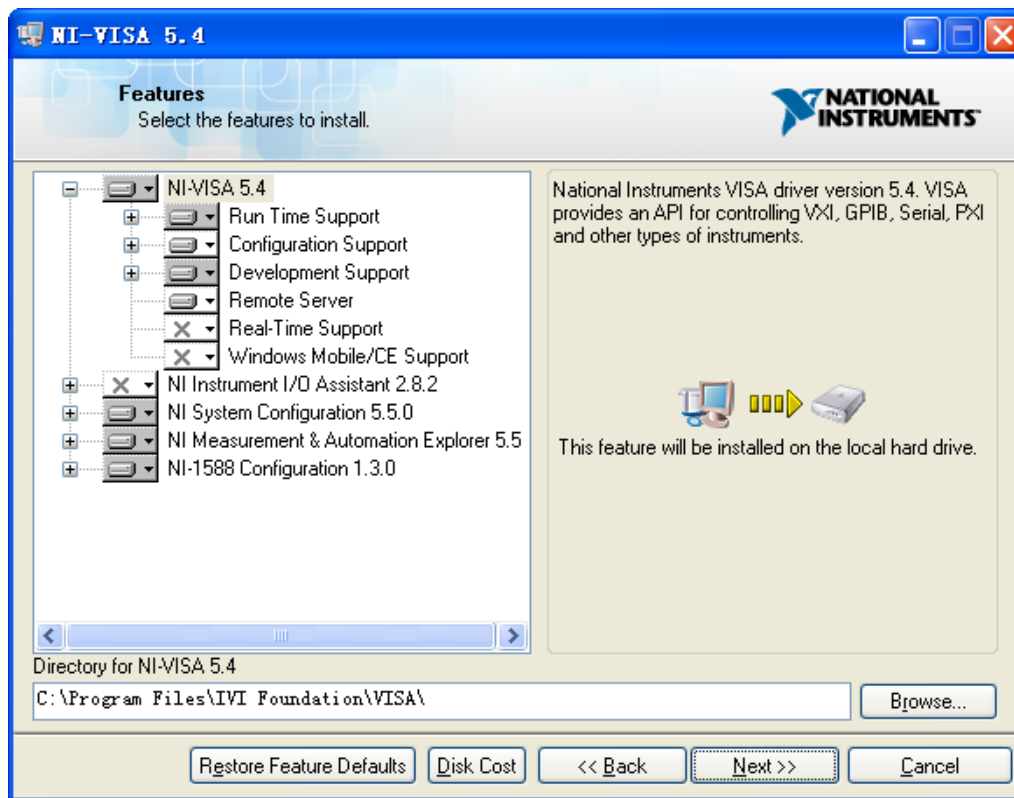
- b. Click Unzip, the installation process will automatically launch after unzipping files. If your computer needs to install .NET Framework 4, its setup process will auto start.



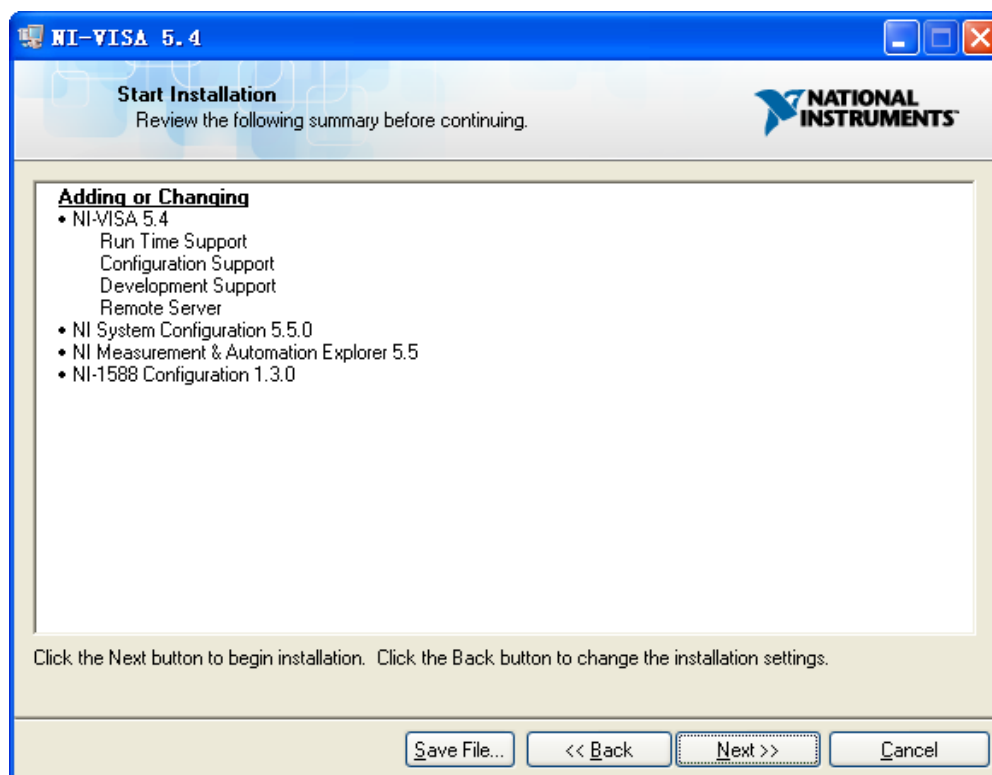
- c. The NI-VISA installing dialog is shown above. Click Next to start the installation process.



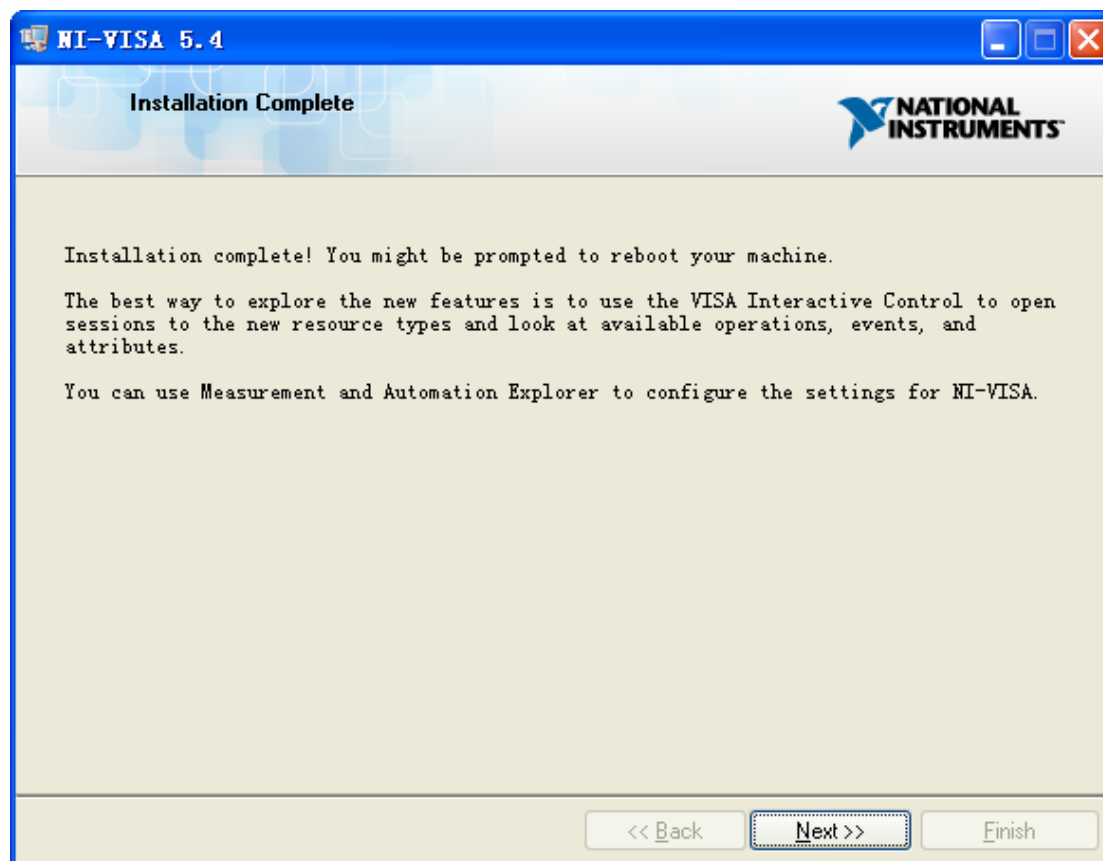
Set the install path, default path is “C:\Program Files\National Instruments\”, you can change it. Click Next, dialog shown as above.



d. Click Next twice, in the License Agreement dialog, select the “ I accept the above 2 License Agreement(s)” ,and click Next, dialog shown as below:



- e. Click Next to run installation.

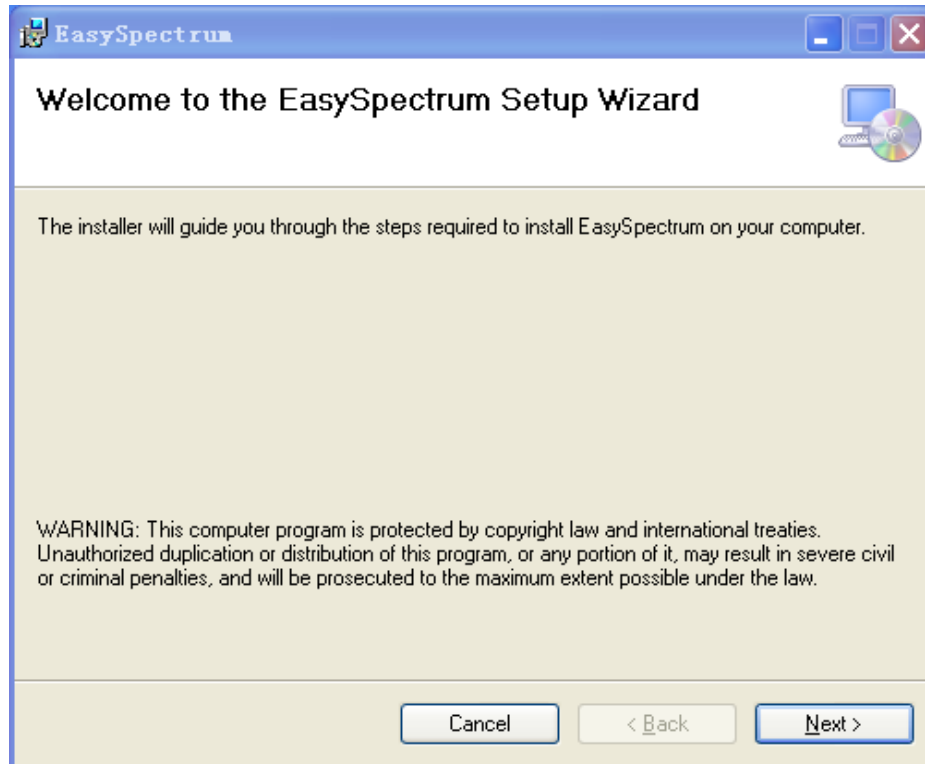


Now the installation is complete, reboot your PC.

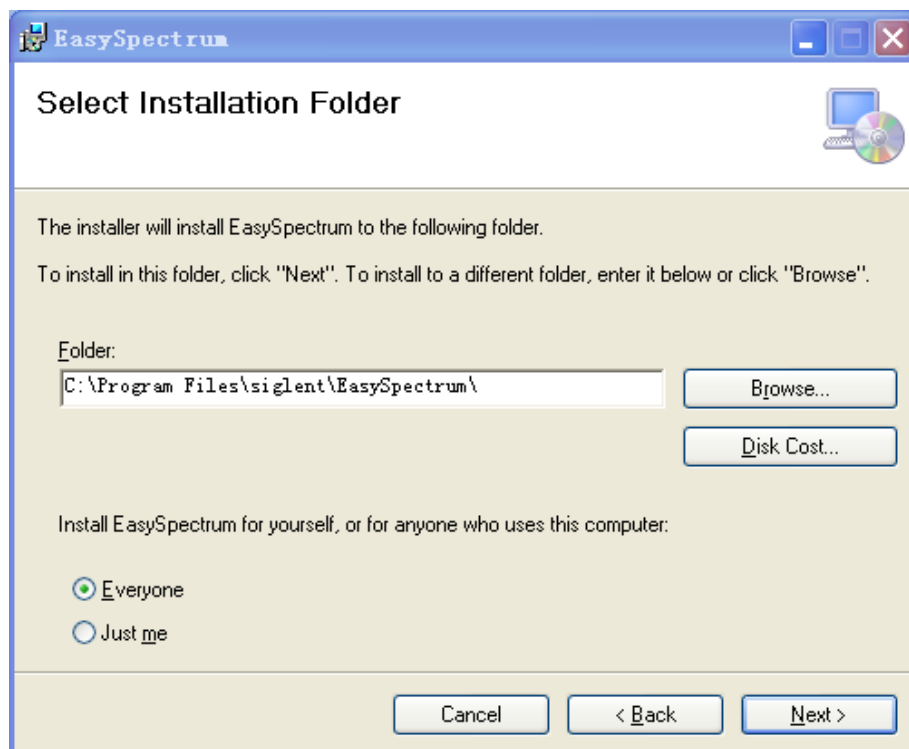
1.3 Install EasySpectrum

Download the latest version of the software from the official website. After you downloaded the file you can follow the steps below to install it:

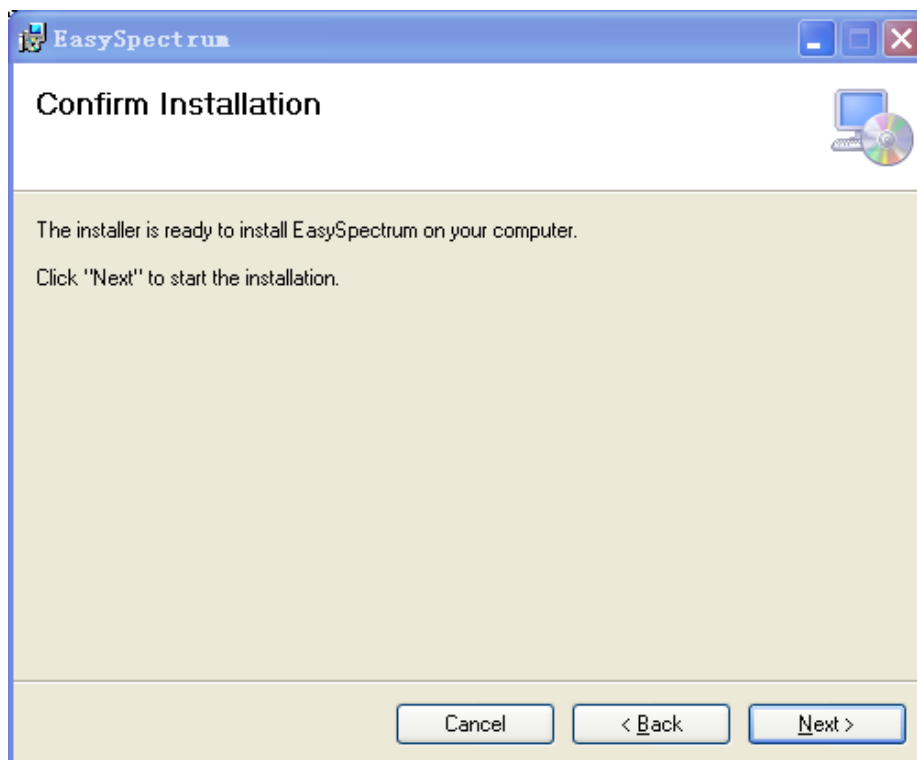
- a. Double click the EasySpectrum.msi, dialog shown as below:



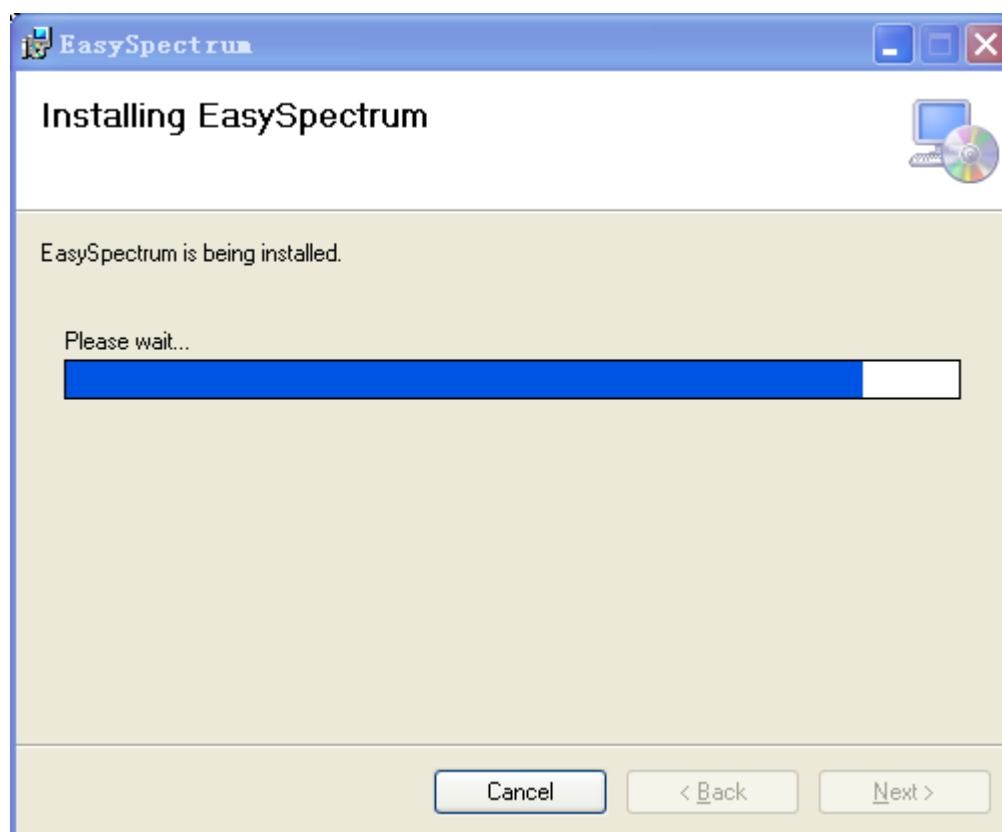
- b. The EasySpectrum installing dialog is shown above. Click Next to start the installation process.



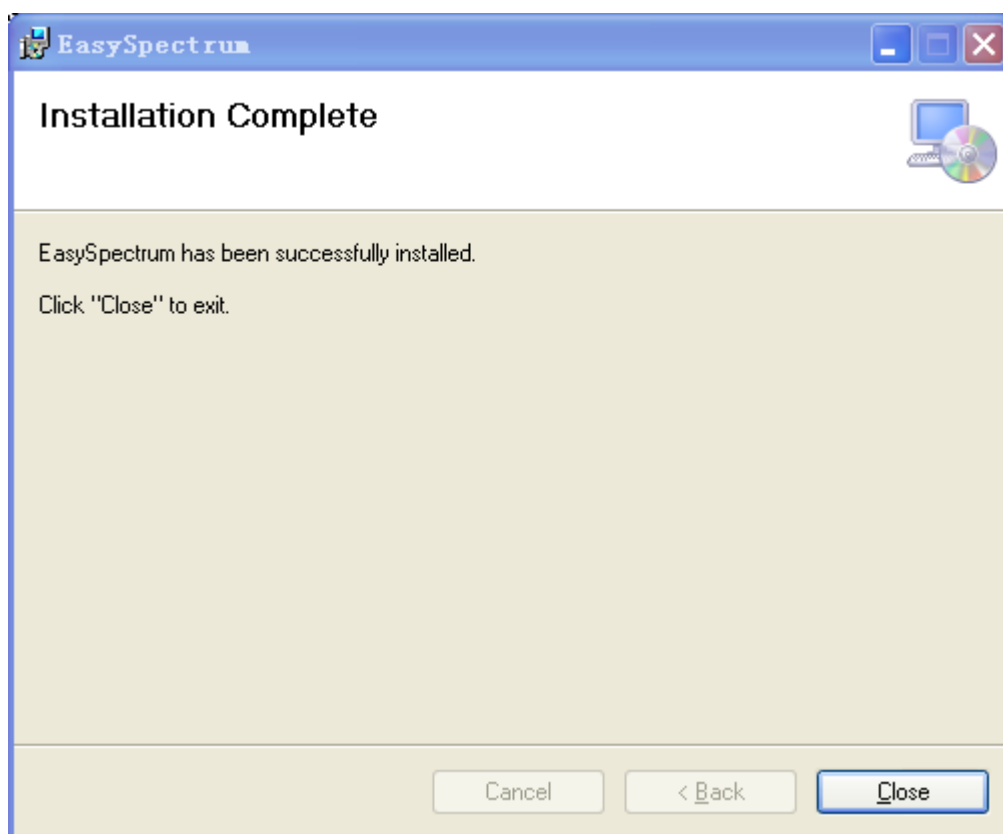
Set the install path, default path is “C:\Program Files\siglent\EasySpectrum\”, you can change it. Click Next, dialog shown as above.



c. Click Next to run installation. dialog shown as below:



- d. Now the installation is complete. Click Close to close the Setup Wizard.



If can not connect to SSA3000X Spectrum Analyzer, please update the Spectrum Analyzer firmware to the latest version and try again.

The latest version of the Spectrum Analyzer firmware can be downloaded in the official website(<http://www.siglent.com>).