

# M20W

Advanced thermal imaging camera with full function analysis



VISIT OUR WEBSITE

**256 x 192** resolution (49,152 pixels) and 40mK thermal sensitivity

**8mp** visual camera captures clear reference images

**25Hz** frame rate for smooth, stutter free imaging

**16GB SD card** – 60,000 images or 60 hours of video

**Wi-Fi** for IOS/ Android to HIKMICRO viewer app

**Laser pointer**

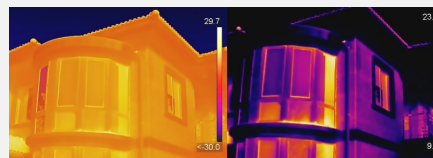
## Speed Your Workflow

Fixed focus with wider angle FOV makes M20W great for scanning walls, floors, facades for items that typically present themselves on a larger scale including water leaks, insulation issues, air infiltration.



## See Details with 1-Tap

Quickly highlights the area of the image you are interested in by narrowing the span with one tap on the **3.5" LCD touchscreen**, instantly improving image contrast and highlighting potential problems.



Auto Level & Span

Manual / 1-Tap Level & Span

## Interchangeable Battery System

Includes **2 interchangeable Li-ion batteries** and a dual bay charger to provide you with **up to 12 hours** of operation. You can stay powered up for even the longest inspections.



2 interchangeable Li-ion batteries

## Complete Your Analysis in the Field

Offers 17 measurement rules, 7 color alarm palettes and 4 image modes for powerful on-camera analysis.

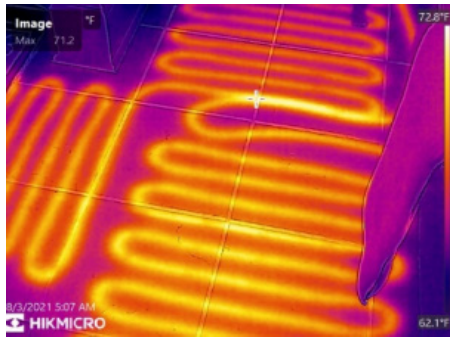
## Fast & Easy Operations

Intuitive **3.5" LCD Touch Screen** or interactive buttons to easily navigate to any function. Use either or both!

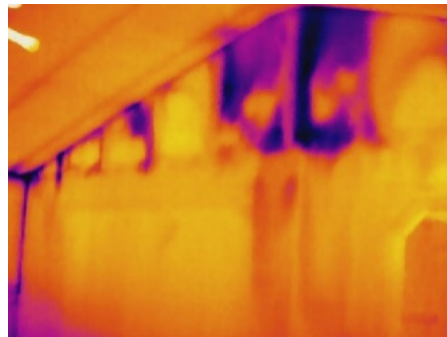
## Annotation at Your Fingertips

Leave text or audio annotations within the images instead of taking notes by hand, helping to improve inspection efficiency and productivity.

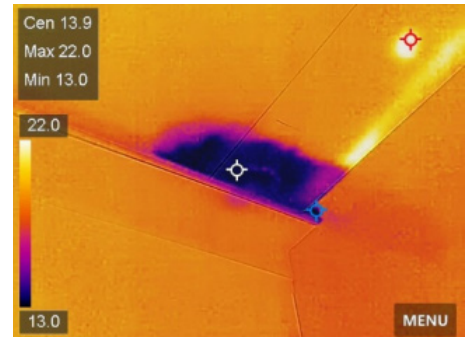
## APPLICATIONS



Underfloor Heating



Building Insulation



Find Moisture Areas

## WHAT'S IN THE BOX



- Thermal Imager with Wrist Strap
- Interchangeable and Rechargeable Li-ion Batteries (x2)
- Power Supply for Battery Charger
- Two-bay Battery Charger
- International Use Plugs (US/EU/UK/AU) for Power Supply (x4)
- USB 2.0 A to USB Type-C Cable
- Hard Carrying Case
- Calibration Certificate / Quick Start Guide
- 16GB Micro SD card(M10/M20/M20W) / 64GB Micro SD card(M30)

## OPTIONAL ACCESSORIES



– Additional batteries –  
E097-13-1S1P26650



– Pouch –  
HM-SP01-POUCH



– Replacement Charger –  
HM-5202ZC

Model No		M20W
Infrared Image	IR Resolution	256 × 192 (49,152 pixels)
	NETD	< 40 mK (@ 25 °C, F#=1.0)
	Image Frequency	25 Hz
	Field of View (FOV)	50° × 37.2°
	Focus Mode	Focus Free
Image Display	Visual Camera	3264 × 2448 (8 MP)
Measurement and Analysis	Object Temperature Range	-20 °C to 550 °C (-4 °F to 1022 °F)
	Accuracy	Max (±2°C/3.6°F, ±2%), for the ambient temp. 15°C to 35 °C (59 °F to 95 °F) and object temp. above 0 °C (32°F)
General	Storage Media	Removable 16 GB Micro SD Card
	Image and Video Formats	JPEG, MP4
	Image Storage Capacity	Approx. 60,000 Images
	Video Storage Capacity	Approx. 15 hours
	Wi-Fi	802.11 b/g/n (2.4 GHz and 5 GHz)
	Battery Operating Time	12 Hours / 6 Hours per Battery

- HIKMICRO Thermography
- infoNAM@hikmicrotech.com
- hikmicro\_thermography
- HIKMICRO Thermography
- HIKMICRO

